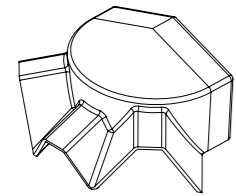
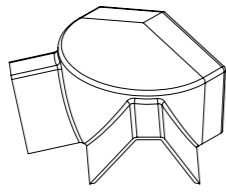


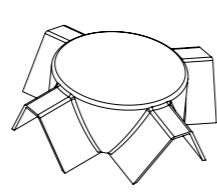
COMPONENTS



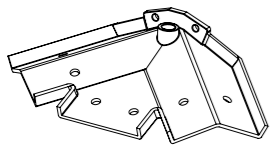
CRS 9240
Skypod 3-bar top cap



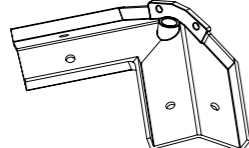
CRS 9241
Skypod 2-bar top cap



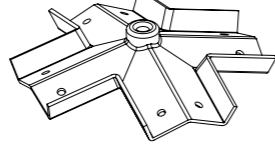
CRS 9242
Skypod SQ spider top cap



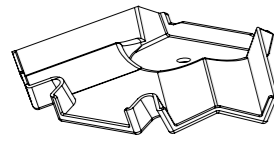
CRS 9521A
Skypod 3-bar spider bracket



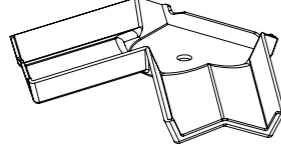
CRS 9522A
Skypod 2-bar spider bracket



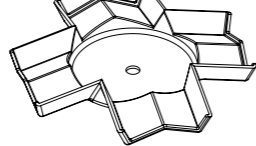
CRS 9523A
Skypod SQ spider bracket



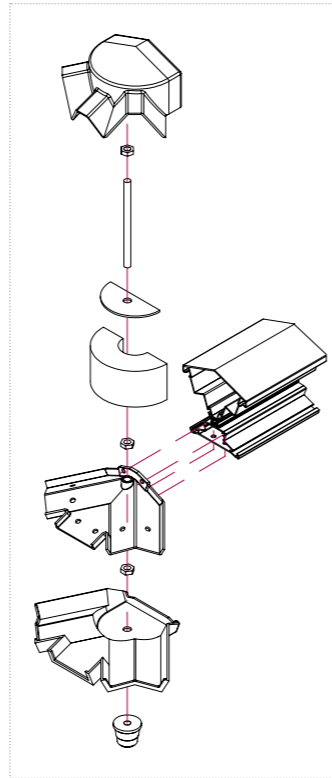
CRS 9248
Skypod 3-bar bottom cap



CRS 9249
Skypod 2-bar bottom cap



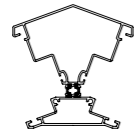
CRS 9250
Skypod SQ spider bottom cap



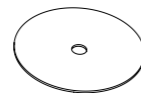
CRS 9421
Skypod foam bung



CRS 9422A
Skypod foam bung sealing plate



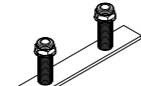
CRS 9520A
Skypod ridge body



CRS 9423
Skypod SQ sealing plate



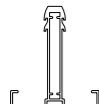
CRS 8625
Single variable support stud



CRS 8624
Double variable support stud



CRS 8534A
M10 decorative boss



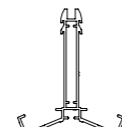
CRS 8501A
Standard rafter



CRS 8016
25mm rafter top cap



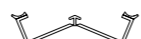
CRS 8011
Rafter bottom cap



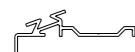
CRS 8502A
Edwardian hip



CRS 8017
25mm Edwardian hip top cap



CRS 8012
Hip bottom cap



CRS 9550A
Skypod eaves 20°



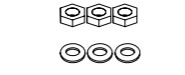
CRS 8053
Eaves beam seal



CRS 8024
24/25mm ridge glazing trim



CRS 8654
90° eaves beam cleat



CRS 8034
M10 nylon threaded bar

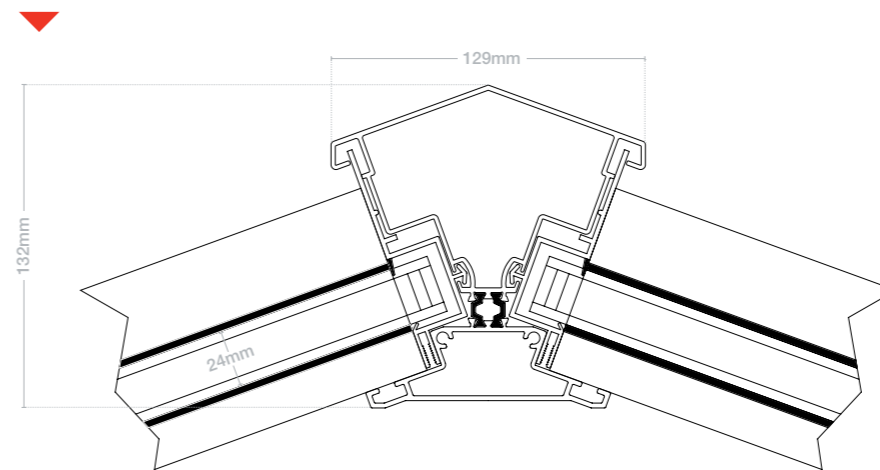
Spider bracket screws

CRS 8626S
CRS 9626S

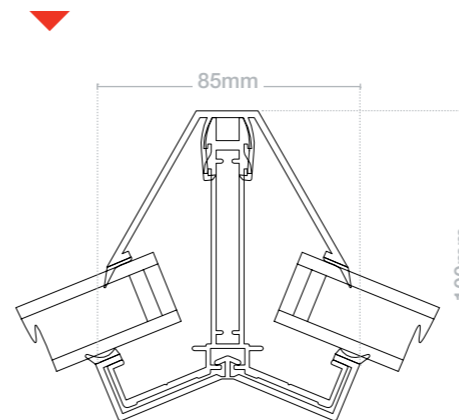
ASSEMBLIES

Ridge assembly

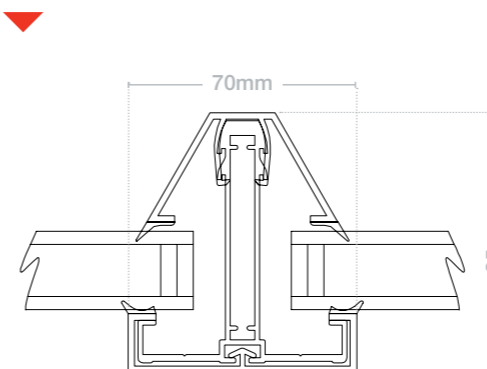
Powder-coated aluminium, thermally broken



Hip assembly



Rafter assembly



Ring beam on kerb assembly

